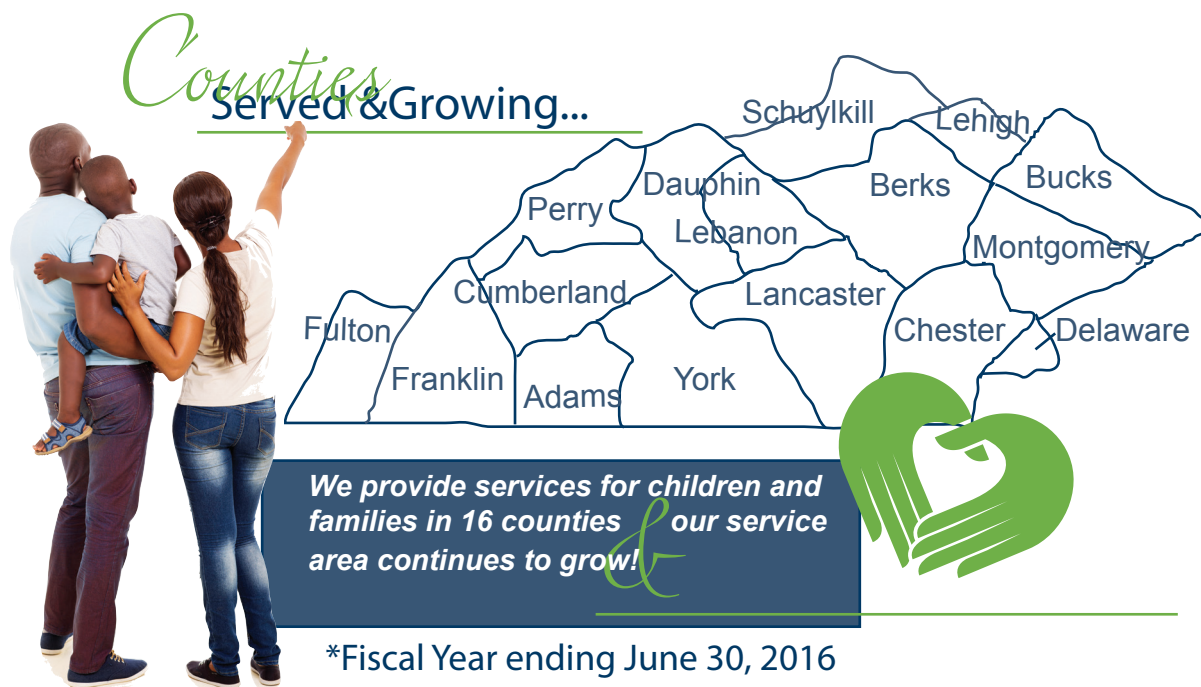


# 2015-2016 Financials\*



	2014/2015	2015/2016
Donations, Gifts, Legacies	\$513,227	\$ 735,861
Other Revenue*	\$707,907	\$506,044
Income From Carrying Out Our Mission	\$6,390,726	\$5,895,592
Total Incoming Resources	\$7,611,860	\$7,137,497

\*Other revenue includes: Dividends, Interest and Rent



# 2015-2016 Financials\*

Program Services Expenses	\$5,894,802
Fundraising Expenses	\$190,865
Management and General Expenses	\$1,222,536
Total Functional Expenses	\$ 7,308,203

Consider joining our

 *Children's Legacy Society*

The Children's Legacy Society was created to recognize those individuals whose estate planning includes a gift to the Children's Home.

Often called the ultimate gift, because it is accomplished after an individual's lifetime, a bequest ensures that the donor's wishes are carried out to make a gift which will benefit future children in need, served by the Children's Home.

To learn more about how you can include Children's Home in your planned gift options contact the development department at 717.755.1033.



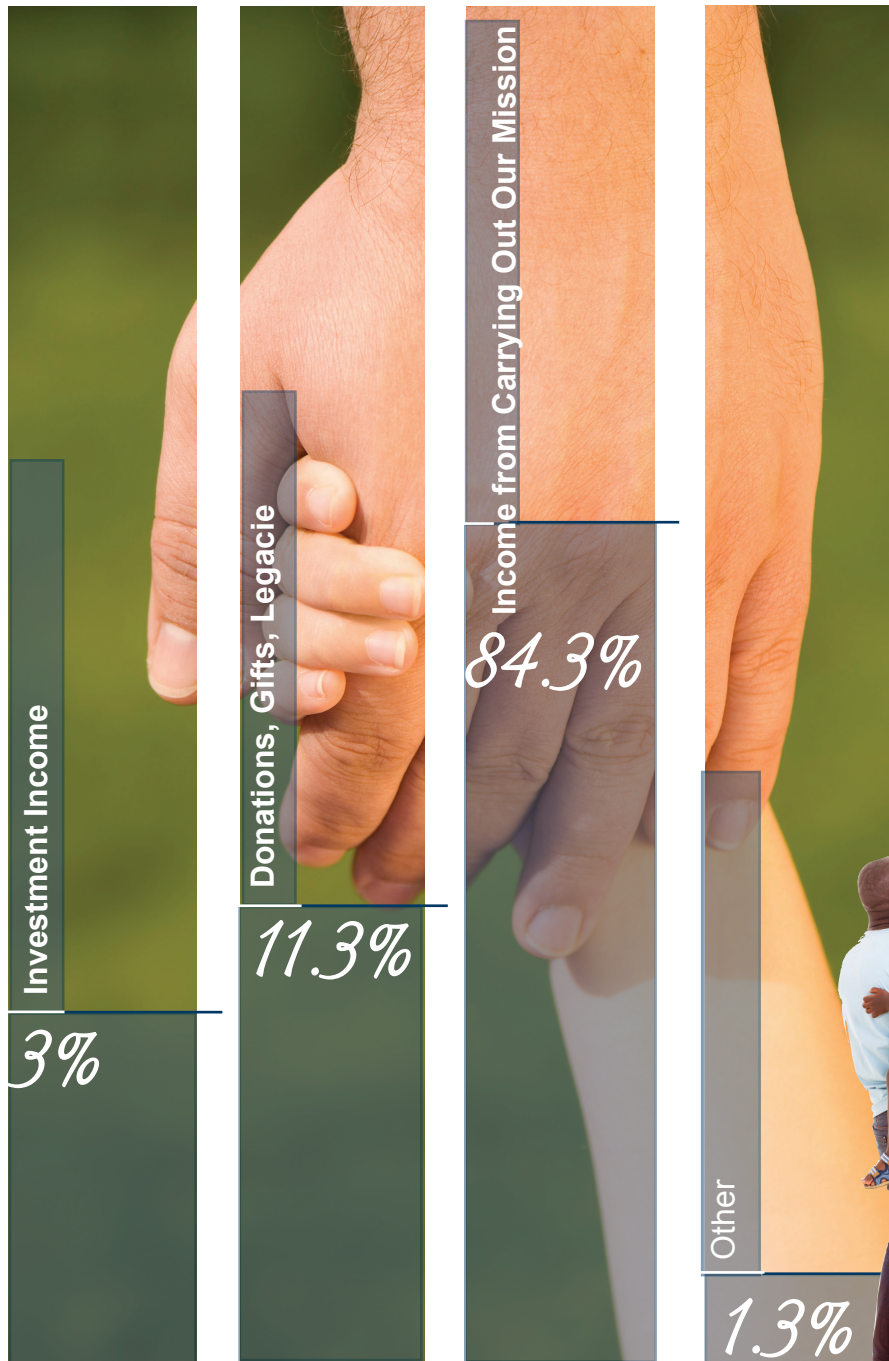
\*Fiscal Year ending June 30, 2016

Through the *generosity* of the community, income from trusts, and investments, deficits incurred are covered.

The financial information presented in this report was extracted from financial statements audited by Stambaugh Ness CPAs Business & Technology Advisors. A complete audited financial statement with accompanying notes and opinion is available for inspection at the Children's Home.



# 2015-2016 Financials\*



Donations, Gifts, Legacies	2014
	\$51
Investment Income	
	\$61
Income From Carrying Out Our Mission	
	\$6,31
Other Revenue	
	\$24
Total Incoming Resources	
	\$7,49



\*Fiscal Year ending June 30, 2016



16  
als\*

enses	\$5,894,802
s	\$190,865
heral Expenses	\$1,222,536
enses	\$ 7,308,203

## Legacy Society

Legacy Society was created to recognize those individuals whose  
udes a gift to the Children's Home.

mate gift, because it is accomplished after an individual's  
ensures that the donor's wishes are carried out to make a gift  
ture children in need, served by the Children's Home.

t how you can include Children's Home  
ptions contact the development department

2016

ity of the community, income from trusts, and investments, deficits incurred are covered.

ed in this report was extracted from financial statements audited by Stambaugh Ness CPAs Business  
ete audited financial statement with accompanying notes and opinion is available for inspection at the Children's Home.

